



Catalogue

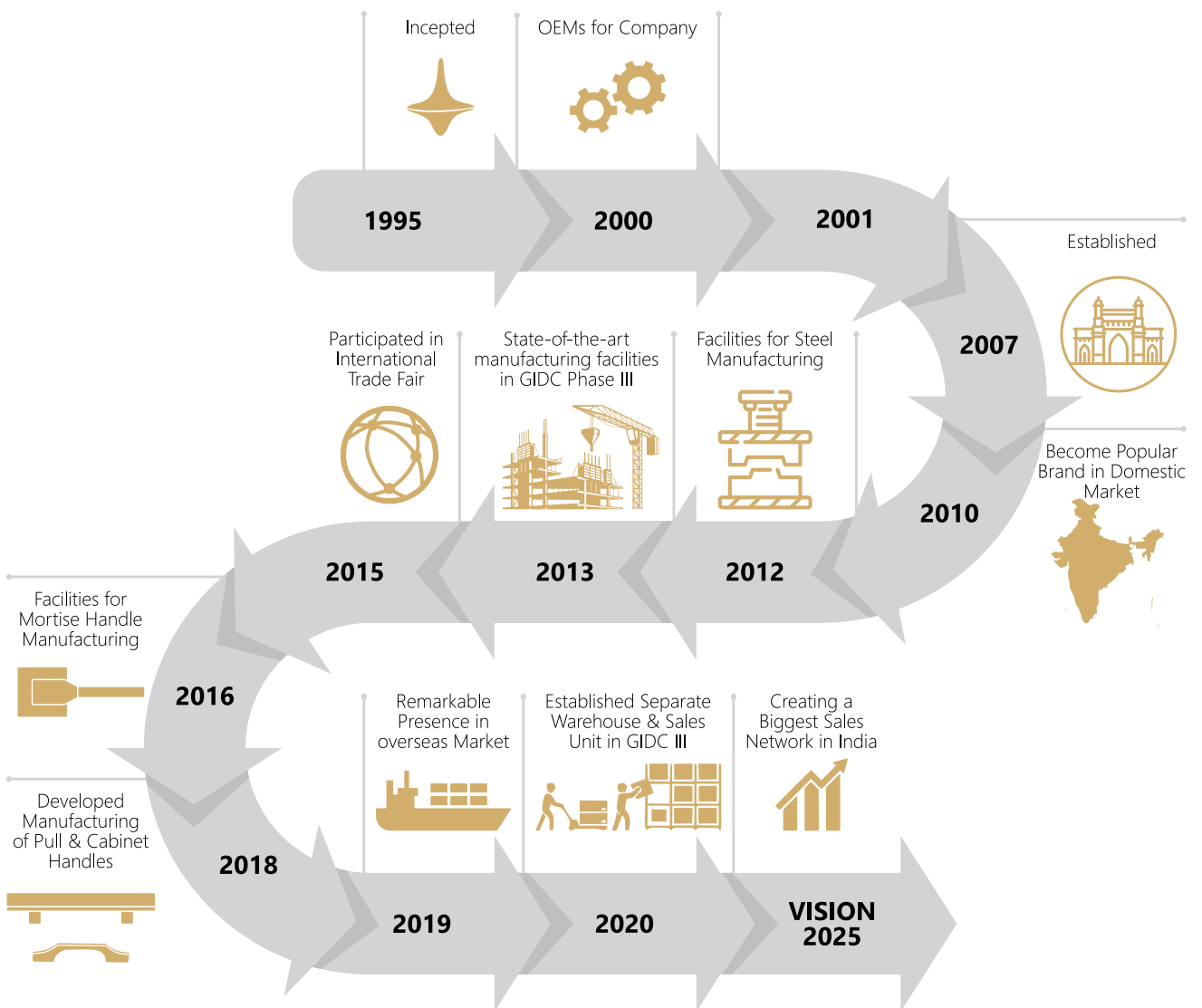
2020 - 21



Redefining life
style of society
by providing simple
and unique solution
to 'every customer',
'every time'.



Milestone



always something new...

Quality

THE



ISO 9001:2008



Best Raw Material



Perfect solution by
CAD CAM CAE



QC Check



Trained Workers



Timely Maintenance



Fastest Service

Madhuram takes pride on being fastest in terms of Order to Dispatch Service.



Automation



Visual Check

Content



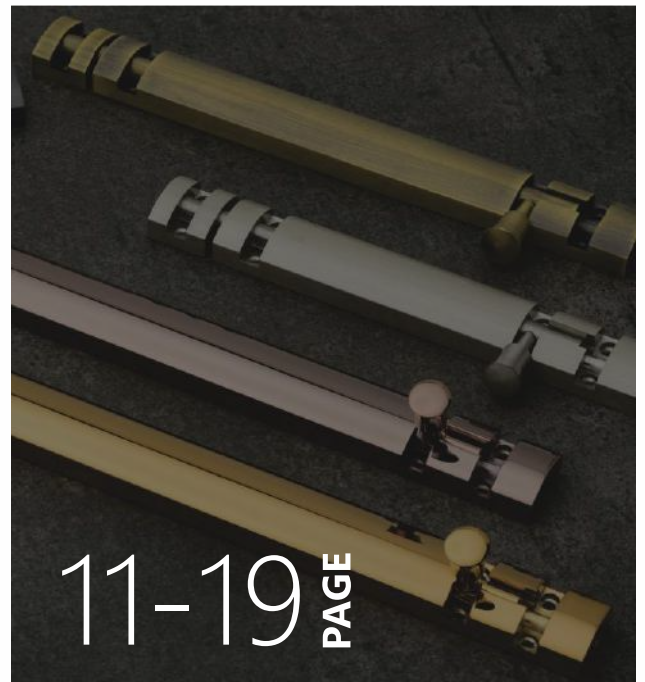
01-10 PAGE

Brass Hinges

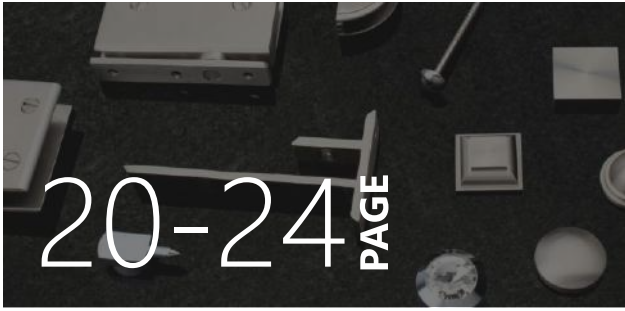
BRASS HINGES BUTT	02
BRASS HINGES RAILWAY	02
BRASS RLY HINGES LOCKING	03
BRASS RLY HINGES WASHER	05
BRASS HINGES BEARING	06
BRASS HINGES BEARING ITALIAN TIP	06
BRASS HINGES L - LOCKING	07
BRASS HINGES L - LOCK 90°	08
BRASS HINGES W - LOCKING	09
BRASS HINGES PARLAMENT	09
BRASS HINGES SPRING	09
BRASS HINGES OVERLAY	10

Brass Towerbolt

BRASS TOWER BOLT 3/8 (Dia. 9.5MM)	12
BRASS TOWER BOLT 10MM	13
BRASS TOWER BOLT 1/2 (Dia. 12mm)	14
BRASS TOWER BOLT 5/8 (Dia. 15mm)	15
BRASS TOWER BOLT CRUZ	15
BRASS TOWER BOLT MEXICO NX	15
BRASS TOWER BOLT TAPPER	16
BRASS TOWER BOLT TAPPER 12MM	17
BRASS TOWER BOLT ROYAL	18
BRASS TOWER BOLT FLUSH	18
BRASS TOWER BOLT NECK	18
BRASS CAM BOLT	19
BRASS BABY LATCH	19



11-19 PAGE

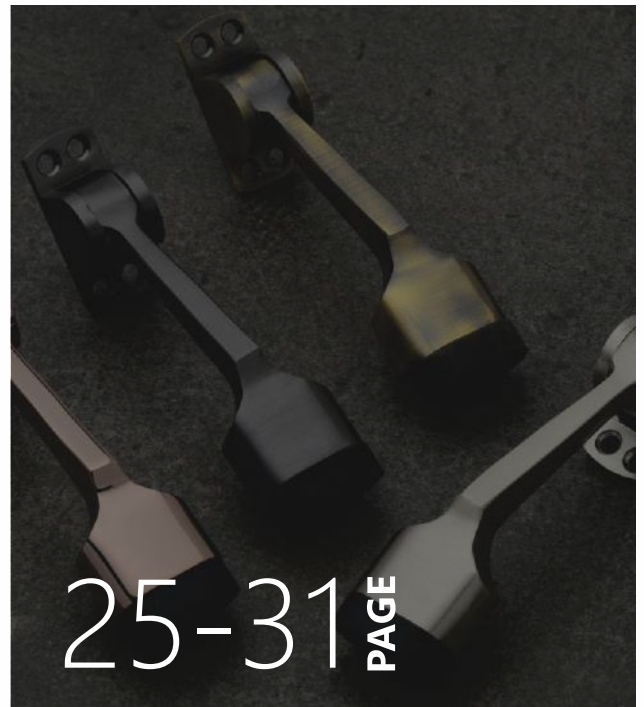


Brass Glass Fittings

BRASS D BRACKET	21
BRASS F BRACKET	21
BRASS SQUARE BRACKET	21
BRASS MIRROR SCREW	22
BRASS MIRROR CAP	22

Brass Fittings

BRASS DOOR STOPPER	26
BRASS DOOR CHAIN	26
BRASS GATE HOOK	27
BRASS WINDOW STAY	27
BRASS DOOR EYE	28
BRASS BEARING PIVOT	28
BRASS PUSH MAGNET	28
BRASS CONCEAL	28
BRASS ALDROPS	29
BRASS TADI	29
BRASS JULLA FITTINGS	30
GLASS CORNER 6MM	30
GLASS SELF 6MM	30
BRASS KHUTI	31

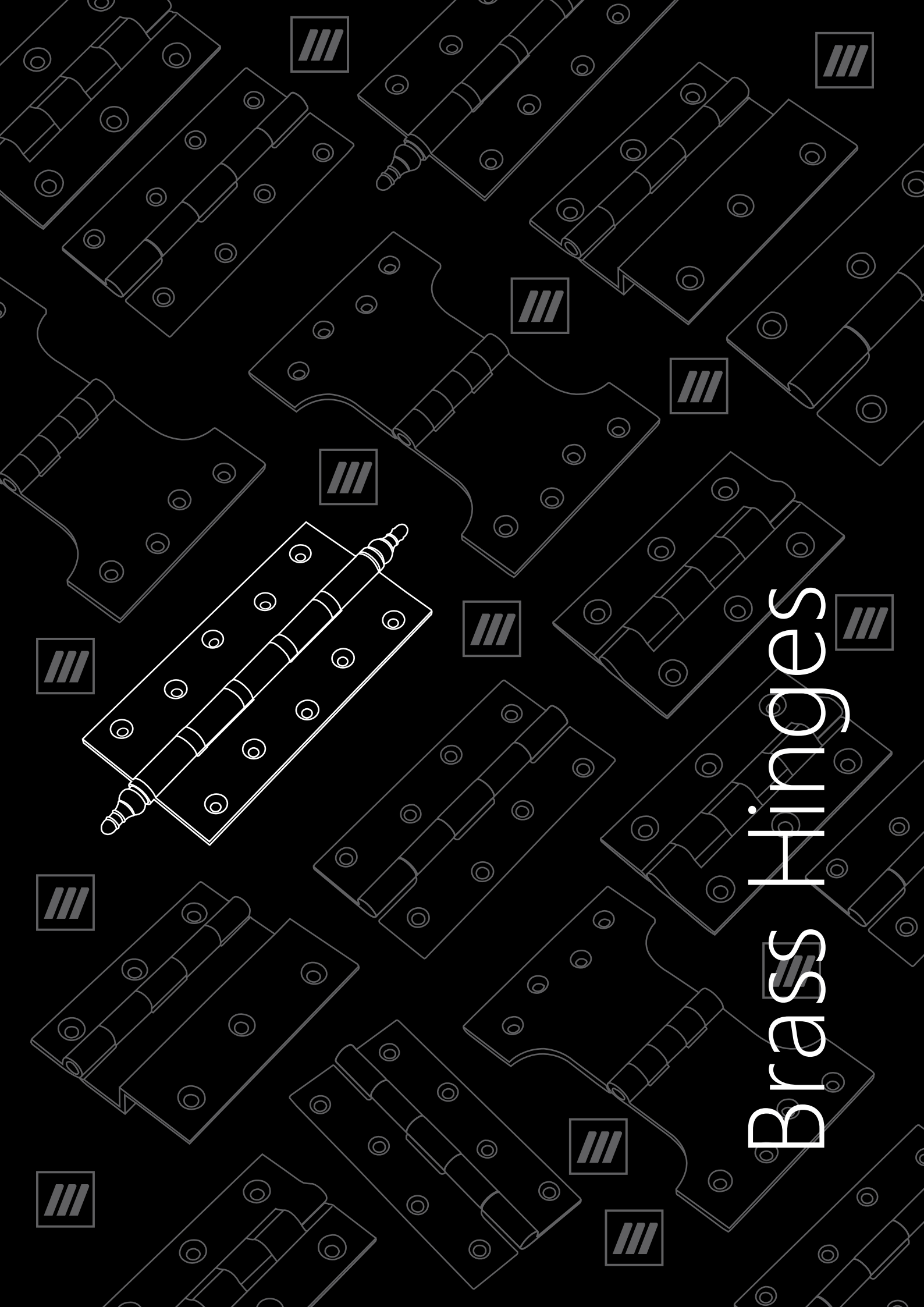


Steel & Aluminium

STEEL HINGES WELDED	33
STEEL TOWER BOLT Dia. 10MM	34
STEEL TOWER BOLT Dia. 12MM	34
STEEL TOWER BOLT NECK	35
TOWER BOLT ALUMINUM	35
MAGNETIC DOOR CATCHER	37

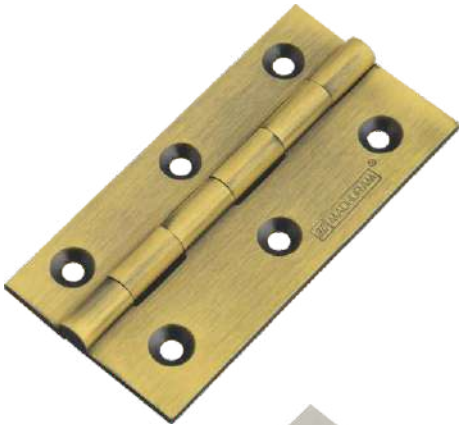
Enchanting Performance





Brass Hinges

BRASS HINGES
BUTT



THICKNESS 3/32

CODE No.	SIZE MM	SIZE INCHES	MRP SS/ABM	PCS / BOX	PCS / CASE	SCREW SIZE
AB03	75x12x19	3X1/2X3/4	123	20	240	6x15
AB04	75x19x19	3X3/4X3/4	137	20	240	6x15
AB07	75x12x25	3X1/2X1	137	20	240	6x15
AB08	75x19x25	3x3/4x1	154	20	240	6x15
AB10	75x12x38	3x1/2x1.1/2	168	20	240	6x15
AB11	75x19x38	3x3/4x1.1/2	183	20	240	6x15
AB14	100x12x19	4X1/2X3/4	165	20	240	6x15
AB15	100x19x19	4X3/4X3/4	183	20	240	6x15
AB18	100x12x25	4X1/2X1	183	20	240	6x15
AB19	100x19x25	4x3/4x1	203	20	240	6x15
AB21	100x12x38	4x1/2x1.1/2	224	20	240	6x15
AB22	100x19x38	4x3/4x1.1/2	244	20	240	6x15



BRASS HINGES
RAILWAY

always something new...



THICKNESS 3/32

CODE No.	SIZE MM	SIZE INCHES	MRP SS/ABM	PCS / BOX	PCS / CASE	SCREW SIZE
BR01	75x19x19	3x3/4x3/4	137	20	240	6x15

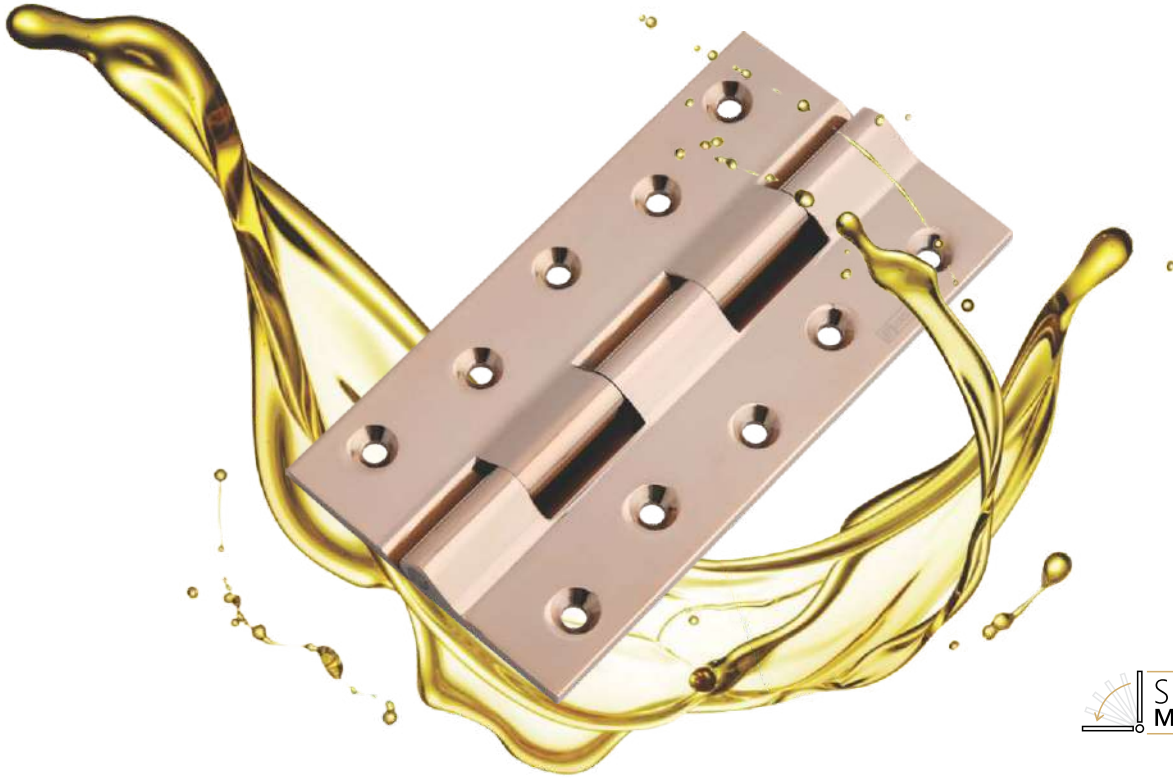


BRASS RLY HINGES
LOCKING



THICKNESS 1/8

CODE No.	SIZE MM	SIZE INCHES	MRP SS/ABM	MRP Z.BLACK	MRP PVD	PCS / BOX	PCS / CASE	SCREW SIZE
IR01	75x22x22	3x7/8x7/8	205	-	-	20	240	7x30
IR02	75x25x25	3x1x1	242	-	-	20	240	7x30
IR04	100x22x22	4x7/8x7/8	271	-	-	10	160	7x30
IR05	100x25x25	4x1x1	322	338	735	5	80	7x30
IR06	100x28x28	4x1.1/8x1.1/8	350	-	-	5	80	7x30
IR07	125x25x25	5x1x1	402	-	-	5	60	7x30
IR08	125x28x28	5x1.1/8x1.1/8	440	-	-	5	60	7x30

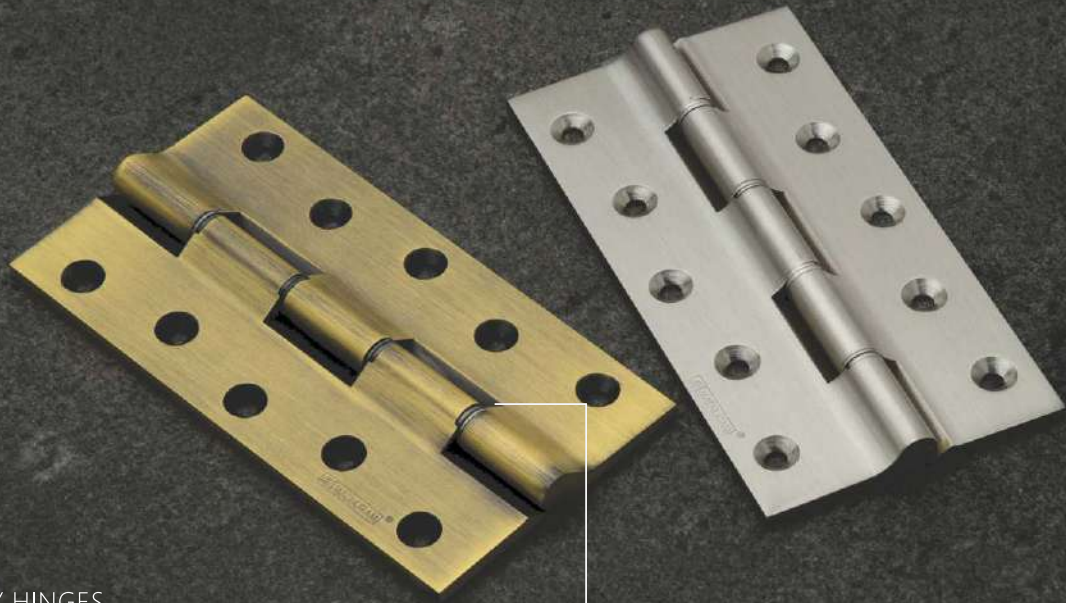


THICKNESS 5/32

CODE No.	SIZE MM	SIZE INCHES	MRP SS/ABM	MRP Z.BLACK	MRP PVD	PCS / BOX	PCS / CASE	SCREW SIZE
IR13	100x25x25	4x1x1	380	-	-	5	80	8x30
IR14	100x28x28	4x1.1/8x1.1/8	421	-	-	5	80	8x30
IR15	100x31x31	4x1.1/4x1.1/4	456	-	-	5	80	8x30
IR16	125x25x25	5x1x1	474	-	-	5	60	8x30
IR17	125x28x28	5x1.1/8x1.1/8	526	552	1110	5	60	8x30
IR18	125x31x31	5x1.1/4x1.1/4	572	600	1190	5	60	8x30
IR19	150x28x28	6x1.1/8x1.1/8	631	-	-	5	50	8x30
IR20	150x31x31	6x1.1/4x1.1/4	686	-	-	5	50	8x30

THICKNESS 3/16

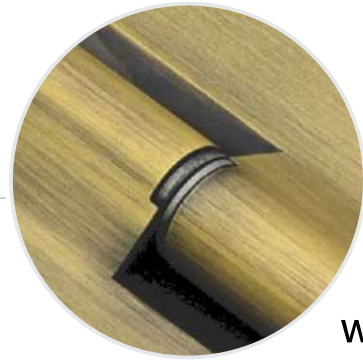
CODE No.	SIZE MM	SIZE INCHES	MRP SS/ABM	MRP Z.BLACK	MRP PVD	PCS / BOX	PCS / CASE	SCREW SIZE
IR28	100x38x38	4x1.1/2x1.1/2	702	-	-	5	80	8x35
IR29	125x31x31	5x1.1/4x1.1/4	718	754	1350	5	60	8x35
IR30	125x38x38	5x1.1/2x1.1/2	860	903	1610	5	60	8x35
IR74	125x50x50	5x2x2	1033	-	-	5	40	8x35
IR31	150x31x31	6x1.1/4x1.1/4	870	914	1620	5	50	8x35
IR32	150x38x38	6x1.1/2x1.1/2	1035	-	-	5	50	8x35
IR72	150x50x50	6x2x2	1239	-	-	5	30	8x35
IR33	200x31x31	8x1.1/4x1.1/4	1220	-	-	5	30	8x35
IR34	200x38x38	8x1.1/2x1.1/2	1450	1523	2550	5	30	8x35
IR75	200x50x50	8x2x2	1723	-	-	5	20	8x35
IR76	250x50x50	10x2x2	3060	-	-	3	18	8x35
IR77	300x50x50	12x2x2	3670	-	-	3	18	8x35



BRASS RLY HINGES
WASHER

THICKNESS 1/8

CODE No.	SIZE MM	SIZE INCHES	MRP SS/ABM	PCS / BOX	PCS / CASE	SCREW SIZE
BR39	75x25x25	3x1x1	253	20	240	7x30
BR41	100x25x25	4x1x1	340	5	80	7x30
BR42	100x28x28	4x1.1/8x1.1/8	365	5	80	7x30
BR43	125x25x25	5x1x1	420	5	60	7x30
BR44	125x28x28	5x1.1/8x1.1/8	460	5	60	7x30



**S.S.
WASHER**

THICKNESS 5/32

CODE No.	SIZE MM	SIZE INCHES	MRP SS/ABM	PCS / BOX	PCS / CASE	SCREW SIZE
BR49	100x25x25	4x1x1	397	5	80	8x30
BR50	100x28x28	4x1.1/8x1.1/8	437	5	80	8x30
BR51	100x31x31	4x1.1/4x1.1/4	474	5	80	8x30
BR52	125x25x25	5x1x1	494	5	60	8x30
BR53	125x28x28	5x1.1/8x1.1/8	547	5	60	8x30
BR54	125x31x31	5x1.1/4x1.1/4	592	5	60	8x30
BR55	150x28x28	6x1.1/8x1.1/8	657	5	50	8x30
BR56	150x31x31	6x1.1/4x1.1/4	713	5	50	8x30

THICKNESS 3/16

CODE No.	SIZE MM	SIZE INCHES	MRP SS/ABM	PCS / BOX	PCS / CASE	SCREW SIZE
BR64	100x38x38	4x1.1/2x1.1/2	715	5	80	8x35
BR65	125x31x31	5x1.1/4x1.1/4	743	5	60	8x35
BR66	125x38x38	5x1.1/2x1.1/2	905	5	60	8x35
BR115	125x50x50	5x2x2	1090	5	40	8x35
BR67	150x31x31	6x1.1/4x1.1/4	910	5	50	8x35
BR68	150x38x38	6x1.1/2x1.1/2	1090	5	50	8x35
BR116	150x50x50	6x2x2	1305	5	30	8x35
BR69	200x31x31	8x1.1/4x1.1/4	1300	5	30	8x35
BR70	200x38x38	8x1.1/2x1.1/2	1550	5	30	8x35
BR117	200x50x50	8x2x2	1870	5	20	8x35

BRASS HINGES
BEARING



CODE No.	SIZE MM	SIZE INCHES	MRP SS/ABM	PCS / BOX	PCS / CASE	SCREW SIZE
3MM						
JB01	75x50x62	3X2X2.5	217	20	240	8x30
JB02	100x75	4x3	453	5	80	8x30
JB03	125x75	5x3	571	5	60	8x30
4MM						
JB05	100x75	4x3	556	5	80	8x30
JB06	125x75	5x3	694	5	60	8x30
JB07	150x75	6x3	835	5	50	8x30
5MM						
JB13	125x88	5X3.1/2	1035	5	60	10x35
JB14	150x88	6X3.1/2	1245	5	50	10x35
JB15	200x88	8x3.1/2	1742	5	30	10x35
JB16	250x88	10x3.1/2	2761	3	24	10x35
JB17	300x88	12x3.1/2	3444	3	24	10x35

BRASS HINGES
BEARING ITALIAN TIP



CODE No.	SIZE MM	SIZE INCHES	MRP SS/ABM	PCS / BOX	PCS / CASE	SCREW SIZE
3MM						
JB32	75x50x62	3X2X2.5	257	20	240	8x30
JB33	100x75	4x3	500	5	80	8x30
JB34	125x75	5x3	616	5	60	8x30
4MM						
JB36	100x75	4x3	603	5	80	8x30
JB37	125x75	5x3	747	5	60	8x30
JB38	150x75	6x3	906	5	50	8x30
5MM						
JB44	125x88	5X3.1/2	1087	5	60	10x35
JB45	150x88	6X3.1/2	1291	5	50	10x35
JB46	200x88	8x3.1/2	1789	5	30	10x35
JB47	250x88	10x3.1/2	2830	3	24	10x35
JB48	300x88	12x3.1/2	3513	3	24	10x35

always something new...

L - LOCKING



THICKNESS 2 MM

CODE No.	SIZE MM	SIZE INCHES	MRP SS	PCS / BOX	PCS / CASE	SCREW SIZE
6MM						
CL77	75x9	3x3/8	164	10	200	6x15
CL79	75x12	3x1/2	187	10	200	6x15
CL80	75x19	3x3/4	234	10	200	6x15
CL81	75x25	3x1	260	10	200	6x15
CL83	100x9	4x3/8	218	10	200	6x15
CL85	100x12	4x1/2	248	10	200	6x15
CL86	100x19	4x3/4	312	10	200	6x15
CL87	100x25	4x1	348	10	200	6x15

12MM

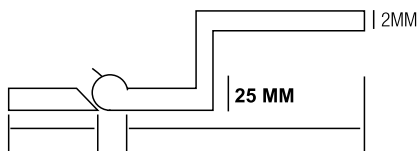
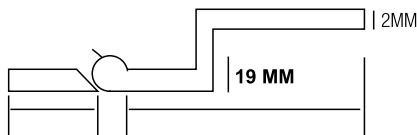
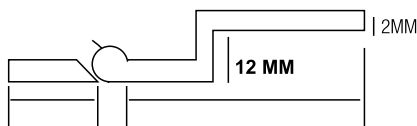
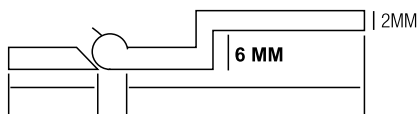
CL89	75x9	3x3/8	191	10	200	6x15
CL91	75x12	3x1/2	219	10	200	6x15
CL92	75x19	3x3/4	250	10	200	6x15
CL93	75x25	3x1	295	10	200	6x15
CL95	100x9	4x3/8	254	10	200	6x15
CL97	100x12	4x1/2	290	10	200	6x15
CL98	100x19	4x3/4	332	10	200	6x15
CL99	100x25	4x1	390	10	200	6x15

19MM

CL101	75x9	3x3/8	210	10	200	6x15
CL103	75x12	3x1/2	238	10	200	6x15
CL104	75x19	3x3/4	270	10	200	6x15
CL105	75x25	3x1	310	10	200	6x15
CL107	100x9	4x3/8	281	10	200	6x15
CL109	100x12	4x1/2	318	10	200	6x15
CL110	100x19	4x3/4	361	10	200	6x15
CL111	100x25	4x1	415	10	200	6x15

25MM

CL114	75x12	3x1/2	270	10	200	6x15
CL115	75x19	3x3/4	307	10	200	6x15
CL116	75x25	3x1	348	10	200	6x15
CL119	100x12	4x1/2	360	10	200	6x15
CL120	100x19	4x3/4	410	10	200	6x15
CL121	100x25	4x1	465	10	200	6x15



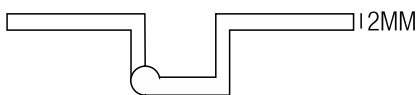
L - LOCK 90°

THICKNESS 2.5 MM



CODE No.	SIZE MM	SIZE INCHES	MRP SS	PCS / BOX	PCS / CASE	SCREW SIZE
6MM						
CL47	75x9	3x3/8	178	10	200	6x15
CL48	75x12	3x1/2	202	10	200	6x15
CL49	75x19	3x3/4	265	10	200	6x15
CL50	75x25	3x1	303	10	200	6x15
CL51	100x9	4x3/8	238	10	200	6x15
CL52	100x12	4x1/2	269	10	200	6x15
CL53	100x19	4x3/4	352	10	200	6x15
CL54	100x25	4x1	404	10	200	6x15
12MM						
CL55	75x9	3x3/8	217	10	200	6x15
CL56	75x12	3x1/2	240	10	200	6x15
CL57	75x19	3x3/4	277	10	200	6x15
CL58	75x25	3x1	318	10	200	6x15
CL59	100x9	4x3/8	290	10	200	6x15
CL60	100x12	4x1/2	320	10	200	6x15
CL61	100x19	4x3/4	374	10	200	6x15
CL62	100x25	4x1	428	10	200	6x15
19MM						
CL63	75x9	3x3/8	236	10	200	6x15
CL64	75x12	3x1/2	265	10	200	6x15
CL65	75x19	3x3/4	295	10	200	6x15
CL66	75x25	3x1	335	10	200	6x15
CL67	100x9	4x3/8	318	10	200	6x15
CL68	100x12	4x1/2	355	10	200	6x15
CL69	100x19	4x3/4	395	10	200	6x15
CL70	100x25	4x1	450	10	200	6x15
25MM						
CL71	75x12	3x1/2	290	10	200	6x15
CL72	75x19	3x3/4	328	10	200	6x15
CL73	75x25	3x1	363	10	200	6x15
CL74	100x12	4x1/2	390	10	200	6x15
CL75	100x19	4x3/4	438	10	200	6x15
CL76	100x25	4x1	487	10	200	6x15

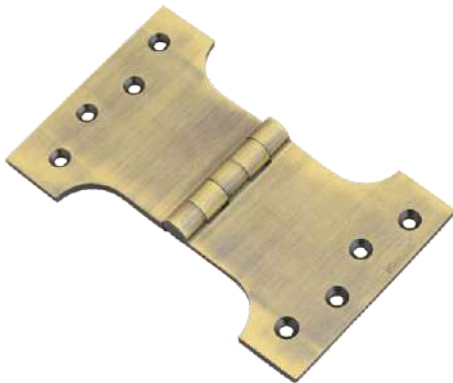
BRASS HINGES
W - LOCKING



THICKNESS 2 MM

CODE No.	SIZE MM	SIZE INCHES	MRP SS	PCS / BOX	PCS / CASE	SCREW SIZE
EW01	50 Regular	Regular 2"	207	10	120	6x15
EW02	75 Regular	Regular 3"	370	10	120	6x15
EW04	75x12x6	3x1/2x6mm	274	10	120	6x15
EW05	100x12x6	4x1/2x6mm	365	10	120	6x15
EW06	75x12x12	3x1/2x12mm	292	10	120	6x15
EW07	100x12x12	4x1/2x12mm	388	10	120	6x15
EW08	75x12x19	3x1/2x19mm	310	10	120	6x15
EW09	100x12x19	4x1/2x19mm	415	10	120	6x15
EW10	75x12x25	3x1/2x25mm	336	10	120	6x15
EW11	100x12x25	4x1/2x25mm	448	10	120	6x15
EW12	75x19x6	3x3/4x6mm	310	10	120	6x15
EW13	100x19x6	4x3/4x6mm	418	10	120	6x15
EW14	75x19x12	3x3/4x12mm	320	10	120	6x15
EW15	100x19x12	4x3/4x12mm	430	10	120	6x15
EW16	75x19x19	3x3/4x19mm	340	10	120	6x15
EW17	100x19x19	4x3/4x19mm	450	10	120	6x15
EW18	75x19x25	3x3/4x25mm	360	10	120	6x15
EW19	100x19x25	4x3/4x25mm	480	10	120	6x15

BRASS HINGES
PARLAMENT



CODE No.	SIZE MM	SIZE INCHES	MRP SS/ABM	PCS / BOX	SCREW SIZE
FP04	100x100	4x4	950	5	8x30
FP05	100x125	4x5	1100	5	8x30
FP08	125x100	5x4	1200	5	8x30
FP09	125x125	5x5	1360	5	8x30
FP10	125x150	5x6	1520	5	8x30

BRASS HINGES
SPRING



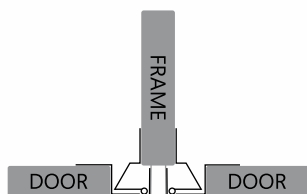
SINGLE ACTION

DOUBLE ACTION

CODE No.	SIZE MM	SIZE INCHES	MRP SS/ABM	PCS / BOX	PCS / CASE	SCREW SIZE
GS01	Single Action x 100	4" (Single)	655	5	80	8x30
GS02	Single Action x 125	5" (Single)	830	5	60	8x30
GS03	Double Action x 100	4" (Double)	1200	3	48	8x30
GS04	Double Action x 125	5" (Double)	1460	3	36	8x30

BRASS HINGES

HALF OVERLAY



CODE No.	SIZE MM	SIZE INCHES	MRP SS	PCS / BOX	PCS / CASE	SCREW SIZE
EW53	19x19	3" (Half)	440	5	60	6x20
EW57	19x25	3" (Half)	422	5	60	6x20
EW61	25x25	3" (Half)	565	5	60	6x20
EW65	25x19	3" (Half)	568	5	60	6x20
EW59	35x25	3" (Half)	1360	5	60	6x20



Benefit of opening Two Doors at one time

Looks Beautiful by covering the whole hinge in laminate

BRASS HINGES

FULL OVERLAY



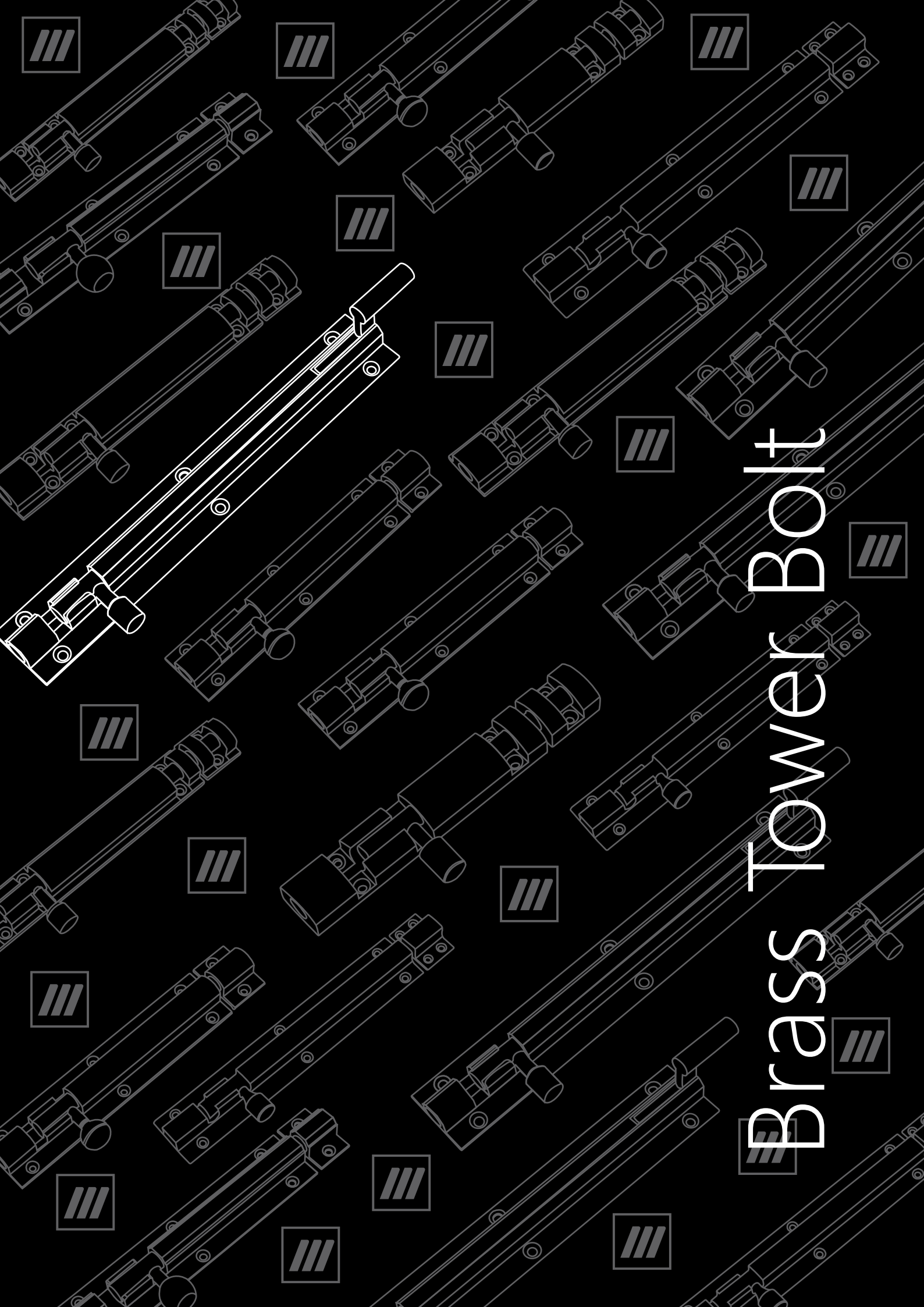
CODE No.	SIZE MM	SIZE INCHES	MRP SS	PCS / BOX	PCS / CASE	SCREW SIZE
EW54	19x19	3" (Full)	440	5	60	6x20
EW58	19x25	3" (Full)	422	5	60	6x20
EW62	25x25	3" (Full)	565	5	60	6x20
EW66	25x19	3" (Full)	568	5	60	6x20
EW70	35x25	3" (Full)	1360	5	60	6x20



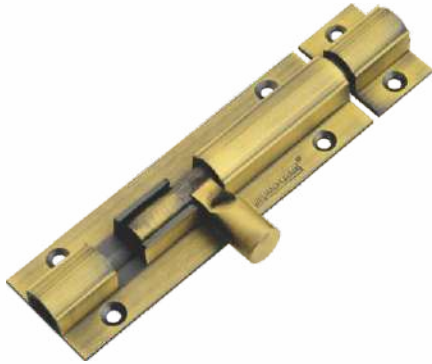
Prevents wear & tear of laminate edges

No need for Door Chain

always something new...



Brass Tower Bolt



ROUND

CODE No.	SIZE MM	SIZE INCHES	MRP SS/ABM	PCS / BOX	PCS / CASE	SCREW SIZE
MT01	9.5x75	3/8x3	178	10	120	5x20
MT02	9.5x100	3/8x4	237	5	100	5x20
MT03	9.5x150	3/8x6	356	5	60	5x20
MT04	9.5x200	3/8x8	475	5	50	5x20
MT05	9.5x250	3/8x10	594	5	30	5x20
MT06	9.5x300	3/8x12	712	5	30	5x20



HEX

CODE No.	SIZE MM	SIZE INCHES	MRP SS/ABM	PCS / BOX	PCS / CASE	SCREW SIZE
MT08	9.5x75	3/8x3	195	10	120	5x20
MT09	9.5x100	3/8x4	252	5	100	5x20
MT10	9.5x150	3/8x6	378	5	60	5x20
MT11	9.5x200	3/8x8	504	5	50	5x20
MT12	9.5x250	3/8x10	630	5	30	5x20
MT13	9.5x300	3/8x12	756	5	30	5x20



BULLET

CODE No.	SIZE MM	SIZE INCHES	MRP SS/ABM	PCS / BOX	PCS / CASE	SCREW SIZE
MT17	9.5x100	3/8x4	280	5	100	5x20
MT18	9.5x150	3/8x6	420	5	60	5x20
MT19	9.5x200	3/8x8	560	5	50	5x20
MT20	9.5x250	3/8x10	700	5	30	5x20
MT21	9.5x300	3/8x12	840	5	30	5x20
MT22	9.5x375	3/8x15	1140	3	36	5x20
MT23	9.5x450	3/8x18	1368	3	36	5x20

BRASS TOWER BOLT
10MM

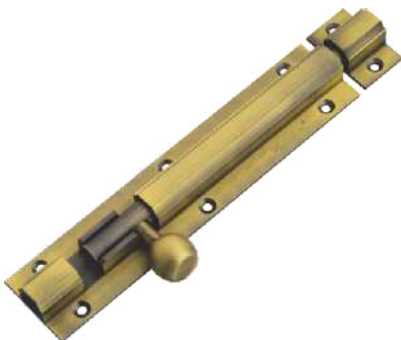


MATAKA



CODE No.	SIZE MM	SIZE INCHES	MRP SS/ABM	MRP Z.BLACK	MRP PVD	PCS / BOX	PCS / CASE	SCREW SIZE
NT1	10x100	4	340	357	555	5	100	5x25
NT2	10x150	6	510	536	815	5	60	5x25
NT3	10x200	8	680	714	1075	5	50	5x25
NT4	10x250	10	850	-	-	5	30	5x25
NT5	10x300	12	1020	1071	1590	5	30	5x25
NT6	10x375	15	1380	-	-	3	36	5x25
NT7	10x450	18	1656	1739	2470	3	36	5x25
NT8	10x600	24	2208	2318	3280	3	36	5x25
NT9	10x750	30	2760	2898	4100	3	24	5x25

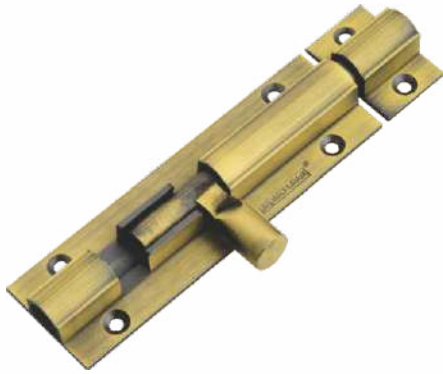
BULLET



CODE No.	SIZE MM	SIZE INCHES	MRP SS/ABM	PCS / BOX	PCS / CASE	SCREW SIZE
NTB1	10x100	4	340	5	100	5x25
NTB2	10x150	6	510	5	60	5x25
NTB3	10x200	8	680	5	50	5x25
NTB4	10x250	10	850	5	30	5x25
NTB5	10x300	12	1020	5	30	5x25
NTB6	10x375	15	1380	3	36	5x25
NTB7	10x450	18	1656	3	36	5x25
NTB8	10x600	24	2208	3	36	5x25

BRASS TOWER BOLT

1/2 (Dia. 12mm)



ROUND

CODE No.	SIZE MM	SIZE INCHES	MRP SS/ABM	PCS / BOX	PCS / CASE	SCREW SIZE
OT1	12x100	1/2x4	392	5	100	6x25
OT2	12x150	1/2x6	588	5	60	6x25
OT3	12x200	1/2x8	784	5	50	6x25
OT4	12x250	1/2x10	980	5	30	6x25
OT5	12x300	1/2x12	1176	5	30	6x25
OT6	12x375	1/2x15	1598	3	36	6x25
OT7	12x450	1/2x18	1917	3	36	6x25
OT8	12x600	1/2x24	2556	3	36	6x25
OT9	12x750	1/2x30	3195	3	24	6x25



HEX

CODE No.	SIZE MM	SIZE INCHES	MRP SS/ABM	PCS / BOX	PCS / CASE	SCREW SIZE
OTH1	12x100	1/2x4	392	5	100	6x25
OTH2	12x150	1/2x6	588	5	60	6x25
OTH3	12x200	1/2x8	784	5	50	6x25
OTH4	12x250	1/2x10	980	5	30	6x25
OTH5	12x300	1/2x12	1176	5	30	6x25
OTH6	12x375	1/2x15	1598	3	36	6x25
OTH7	12x450	1/2x18	1917	3	36	6x25
OTH8	12x600	1/2x24	2556	3	36	6x25

BULLET

CODE No.	SIZE MM	SIZE INCHES	MRP SS/ABM	PCS / BOX	PCS / CASE	SCREW SIZE
OT11	12x100	1/2x4	444	5	100	6x25
OT12	12x150	1/2x6	666	5	60	6x25
OT13	12x200	1/2x8	888	5	50	6x25
OT14	12x250	1/2x10	1110	5	30	6x25
OT15	12x300	1/2x12	1332	5	30	6x25
OT16	12x375	1/2x15	1800	3	36	6x25
OT17	12x450	1/2x18	2160	3	36	6x25
OT18	12x600	1/2x24	2880	3	36	6x25
OT19	12x750	1/2x30	3750	3	24	6x25
OT20	12x900	1/2x36	4500	3	24	6x25
OT21	12x1050	1/2x42	5250	3	12	6x25
OT22	12x1200	1/2x48	6000	3	12	6x25



always something new...

BRASS TOWER BOLT
5/8 (Dia. 15mm)



ROUND

CODE No.	SIZE MM	SIZE INCHES	MRP SS/ABM	PCS / BOX	SCREW SIZE
PT01	15x100	4	949	2	8x30
PT02	15x150	6	1355	2	8x30
PT03	15x200	8	1808	2	8x30
PT04	15x250	10	2261	2	8x30
PT05	15x300	12	2712	2	8x30
PT06	15x375	15	3728	1	8x30
PT07	15x450	18	4475	1	8x30
PT08	15x600	24	5965	1	8x30
PT09	15x750	30	7830	1	8x30
PT10	15x900	36	9396	1	8x30
PT11	15x1050	42	11511	1	8x30
PT12	15x1200	48	13156	1	8x30
PT13	15x1500	60	18088	1	8x30
PT14	15x1800	72	23877	1	8x30

BRASS TOWER BOLT
CRUZ



CODE No.	SIZE MM	SIZE INCHES	MRP SS/ABM	PCS / BOX	PCS / CASE	SCREW SIZE
ST48	100	4	252	5	100	6x20
ST49	150	6	378	5	60	6x20
ST50	200	8	504	5	50	6x20
ST51	250	10	630	5	30	6x20
ST52	300	12	756	5	30	6x20

BRASS TOWER BOLT
MEXICO NX



CODE No.	SIZE MM	SIZE INCHES	MRP SS/ABM	PCS / BOX	PCS / CASE	SCREW SIZE
ST64	75	3	220	10	120	5x20
ST65	100	4	265	5	100	5x20
ST66	150	6	398	5	60	5x20
ST67	200	8	530	5	50	5x20
ST68	250	10	663	5	30	5x20
ST69	300	12	795	5	30	5x20



BRASS TOWER BOLT
TAPPER

CODE No.	SIZE MM	SIZE INCHES	MRP SS/ABM	MRP Z.BLACK	MRP PVD	PCS / BOX	PCS / CASE	SCREW SIZE
ST83	100	4	444	466	665	5	100	6x20
ST84	150	6	666	699	980	5	60	6x20
ST85	200	8	888	932	1300	5	50	6x20
ST86	250	10	1110	-	-	5	30	6x20
ST87	300	12	1332	1399	1930	5	30	6x20
ST89	450	18	2160	2268	2980	3	36	6x20
ST90	600	24	2880	3024	3980	3	36	6x20

always something new...



PVD

BRASS TOWER BOLT

TAPPER 12MM



MAIN DOOR SPECIALIST
Beauty With High Safety



CODE No.	SIZE MM	SIZE INCHES	MRP SS/ABM	PCS / BOX	SCREW SIZE
ST108	150	6	1328	3	7x30
ST104	200	8	1772	3	7x30
ST107	250	10	2195	3	7x30
ST105	300	12	2594	3	7x30
ST110	450	18	3890	1	7x30
ST111	600	24	5180	1	7x30

BRASS TOWER BOLT
ROYAL



CODE No.	SIZE MM	SIZE INCHES	MRP SS/ABM	PCS / BOX	PCS / CASE	SCREW SIZE
ST17	100	4	384	5	100	6x20
ST18	150	6	576	5	60	6x20
ST19	200	8	768	5	50	6x20
ST20	250	10	960	5	30	6x20
ST21	300	12	1152	5	30	6x20

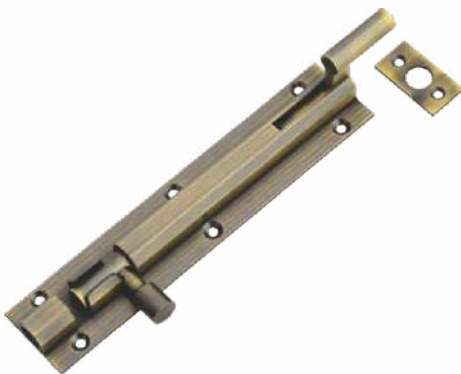
BRASS TOWER BOLT
FLUSH



CODE No.	SIZE MM	SIZE INCHES	MRP SS/ABM	PCS / BOX	PCS / CASE	SCREW SIZE
ST25	100	4	202	5	100	6x20
ST26	150	6	304	5	60	6x20
ST27	200	8	406	5	50	6x20
ST28	250	10	509	5	30	6x20
ST29	300	12	610	5	30	6x20
ST30	375	15	838	3	36	6x20
ST31	450	18	1005	3	36	6x20
ST32	600	24	1342	3	36	6x20

BRASS TOWER BOLT
NECK

always something new...



CODE No.	SIZE MM	SIZE INCHES	MRP SS/ABM	PCS / BOX	PCS / CASE	SCREW SIZE
ST91	75	3	230	10	120	5x20
ST92	100	4	290	5	100	5x20
ST93	150	6	435	5	60	5x20
ST94	200	8	580	5	50	5x20
ST95	250	10	725	5	30	5x20
ST96	300	12	870	5	30	5x20
ST97	375	15	1185	3	36	5x20
ST98	450	18	1422	3	36	5x20
ST99	600	24	1896	3	36	5x20

BRASS

CAM BOLT



CODE No.	SIZE MM	SIZE INCHES	MRP SS	PAIR / BOX	PAIR / CASE	SCREW SIZE
ST100	SMALL 40.MM	SMALL 40.MM	465	10	120	5x20



Life made easy with cambolt, all you need to do is just close the door and rest is done.

BRASS

BABY LATCH



SQUARE

CODE No.	SIZE MM	SIZE INCHES	MRP SS/ABM	PCS / BOX	PCS / CASE	SCREW SIZE
TB01	Square x 75	3	780	5	60	5x25

ZEN

CODE No.	SIZE MM	SIZE INCHES	MRP SS/ABM	PCS / BOX	PCS / CASE	SCREW SIZE
TB03	Zen x 75	3	195	10	120	5x20
TB04	Zen x 100	4	288	5	100	5x20

Brass Glass Fittings

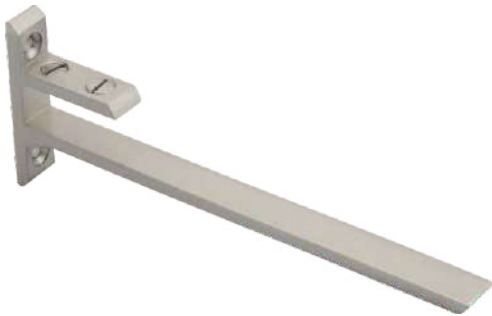


BRASS
D BRACKET



CODE No.	SIZE MM	SIZE INCHES	MRP SS	PCS / BOX	SCREW SIZE
XD01	37x6	1.1/2x6mm	55	30	5x25
XD02	37x8	1.1/2x8mm	59	30	5x25
XD04	37x12	1.1/2x12mm	63	30	5x25
XD05	50x6	2x6mm	78	15	5x25
XD06	50x8	2x8mm	88	15	5x25
XD08	50x12	2x12mm	98	15	5x25

BRASS
F BRACKET



CODE No.	SIZE MM	SIZE INCHES	MRP SS	PCS / BOX	SCREW SIZE
XF03	78x8	3x8mm	89	20	7x30
XF04	75x12	3x12mm	96	20	7x30
XF05	100x8	4x8mm	117	20	7x30
XF06	100x12	4x12mm	117	20	7x30
XF07	150x6	6x6mm	181	10	7x30
XF08	150x8	6x8mm	181	10	7x30
XF09	150x12	6x12mm	181	10	7x30
XF10	200x8	8x8mm	275	10	7x30
XF11	200x12	8x12mm	275	10	7x30
XF12	250x8	10x8mm	398	10	7x30
XF13	250x12	10x12mm	398	10	7x30
XF14	300x8	12x8mm	485	10	7x30
XF15	300x12	12x12mm	485	10	7x30

BRASS
SQUARE BRACKET



CODE No.	SIZE MM	SIZE INCHES	MRP SS	PCS / BOX	SCREW SIZE
XS01	50x25x6	2x1x6mm	79	20	5x25
XS02	50x25x8	2x1x8mm	118	20	5x25
XS03	50x25x12	2x1x12mm	186	20	5x25

BRASS

MIRROR SCREW



CODE No.	SIZE MM	SIZE INCHES	MRP CP	GROOS/ BOX
XM01	12	1/2.	615	2
XM02	15	3/4.	635	2
XM03	25	1	655	2
XM04	31	1.1/4	670	2
XM05	38	1.1/2	690	1
XM06	50	2	765	1
XM07	62	2.1/2	840	1
XM08	75	3	930	1

BRASS

MIRROR CAP



“ROUND FLAT”

CODE No.	SIZE MM	SIZE INCHES	MRP SS/ABM	PCS / BOX	SCREW SIZE
YC01	12MM	1/2"	18	200	7x20
YC02	15MM	5/8"	23	200	7x20
YC03	19MM	3/4"	26	200	7x20
YC04	25MM	1"	34	100	7x20
YC05	31MM	1.1/4"	56	100	7x20
YC06	38MM	1.1/2"	69	50	7x20
YC07	50MM	2"	145	50	7x20
YC08	63MM	2.1/2"	295	20	7x20
YC09	75MM	3"	470	20	7x20

“SQUARE”

CODE No.	SIZE MM	SIZE INCHES	MRP SS/ABM	PCS / BOX	SCREW SIZE
YC10	12MM	1/2"	23	200	7x20
YC11	19MM	3/4"	37	200	7x20
YC12	25MM	1"	54	100	7x20
YC13	31MM	1.1/4"	95	50	7x20
YC14	38MM	1.1/2"	120	50	7x20
YC15	50MM	2"	245	30	7x20
YC16	63MM	2.1/2"	480	30	7x20
YC17	75MM	3	590	20	7x20



“PYRAMID”

CODE No.	SIZE MM	SIZE INCHES	MRP SS/ABM	PCS / BOX	SCREW SIZE
YC18	12MM	1/2"	22	200	7x20
YC19	19MM	3/4"	32	200	7x20
YC20	25MM	1"	47	100	7x20
YC21	31MM	1.1/4"	92	50	7x20
YC22	38MM	1.1/2"	125	50	7x20
YC23	50MM	2"	260	30	7x20
YC24	63MM	2.1/2	470	20	7x20
YC25	75MM	3	600	10	7x20
YC26	100MM	4	1380	5	7x20



“ROYAL”

CODE No.	SIZE MM	SIZE INCHES	MRP SS/ABM	PCS / BOX	SCREW SIZE
YC27	21MM	7/8"	69	50	7x20
YC28	25MM	1"	84	50	7x20
YC29	31MM	1.1/4"	113	50	7x20
YC30	38MM	1.1/2"	154	20	7x20
YC31	50MM	2"	312	20	7x20
YC32	63MM	2.1/2	690	10	7x20
YC33	75MM	3	1030	5	7x20



“DOME”

CODE No.	SIZE MM	SIZE INCHES	MRP SS/ABM	PCS / BOX	SCREW SIZE
YC34	12MM	1/2"	21	200	7x20
YC35	19MM	3/4"	31	200	7x20
YC36	25MM	1"	43	100	7x20
YC37	31MM	1.1/4"	75	50	7x20
YC38	38MM	1.1/2"	100	50	7x20
YC39	50MM	2"	225	20	7x20

“DOOMS”



CODE No.	SIZE MM	SIZE INCHES	MRP SS/ABM	PCS / BOX	SCREW SIZE
YC40	15MM	5/8"	36	200	7x20
YC41	19MM	3/4"	47	200	7x20
YC42	25MM	1"	73	100	7x20
YC43	38MM	1.1/2"	140	40	7x20
YC44	50MM	2"	290	20	7x20

“ROYAL PYRAMID”



CODE No.	SIZE MM	SIZE INCHES	MRP SS/ABM	PCS / BOX	SCREW SIZE
YC45	25MM	1"	111	50	7x20
YC46	31MM	1.1/4"	127	50	7x20
YC47	38MM	1.1/2"	202	30	7x20
YC48	50MM	2"	372	10	7x20
YC49	63MM	2.1/2"	740	5	7x20
YC50	75MM	3"	1050	5	7x20
YC51	100MM	4"	2290	2	7x20

“CRYSTAL”

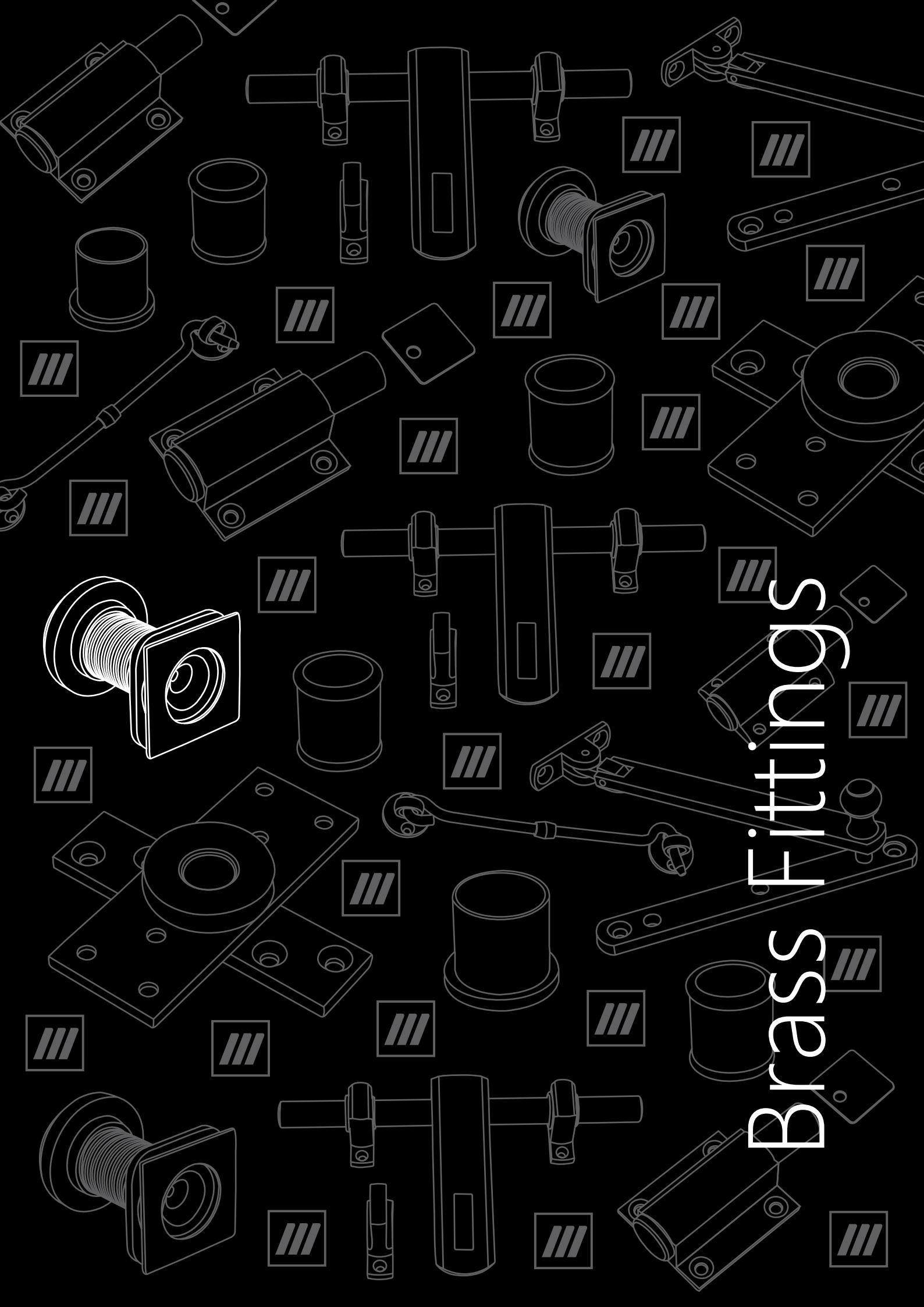


CODE No.	SIZE MM	SIZE INCHES	MRP CP	PCS / BOX	SCREW SIZE
YC52	12MM	1/2"	46	200	7x20
YC53	19MM	3/4"	62	50	7x20
YC54	25MM	1"	77	50	7x20
YC55	31MM	1.1/4"	177	20	7x20
YC56	38MM	1.1/2"	248	8	7x20

“SWASTIK”



CODE No.	SIZE MM	SIZE INCHES	MRP SS/ABM	PCS / BOX	SCREW SIZE
YC57	25MM	1"	88	100	7x20
YC58	31MM	1.1/4"	122	50	7x20
YC59	38MM	1.1/2"	172	50	7x20
YC60	50MM	2"	295	30	7x20
YC61	63MM	2.1/2"	510	30	7x20
YC62	75MM	3"	675	20	7x20



Brass Fittings



BRASS
DOOR STOPPER



JORJAN

CODE No.	ITEM TYPE	SIZE INCHES	MRP SS/ABM	PCS / BOX	PCS / CASE	SCREW SIZE
UD02	Jorjan	5	615	5	60	7x25



MEXICO

CODE No.	ITEM TYPE	SIZE INCHES	MRP SS/ABM	MRP Z.BLACK	MRP PVD	PCS / BOX	PCS / CASE	SCREW SIZE
UD03	Mexico	5	540	567	735	5	60	7x25

BRASS
DOOR CHAIN



CODE No.	SIZE MM	SIZE INCHES	MRP SS/ABM	PCS / BOX	SCREW SIZE
UC01	200	8	635	5	7x25

always something new...

BRASS

GATE HOOK



HEAVY

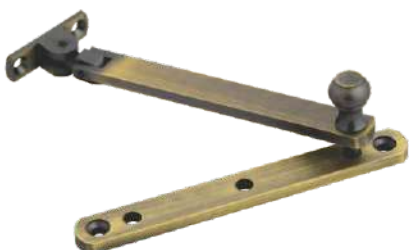
CODE No.	SIZE MM	SIZE INCHES	MRP SS/ABM	PCS / BOX	PCS / CASE	SCREW SIZE
UG16	50	2	116	20	240	6x20
UG01	62	2.1/2	116	20	240	6x20
UG02	75	3	116	20	240	6x20
UG03	100	4	118	20	240	6x20
UG04	125	5	120	10	200	6x20
UG05	150	6	120	10	200	6x20

FANCY

CODE No.	SIZE MM	SIZE INCHES	MRP SS/ABM	PCS / BOX	PCS / CASE	SCREW SIZE
UG18	62	2.1/2	140	20	240	6x20
UG06	100	4	142	20	240	6x20
UG07	125	5	142	10	200	6x20
UG08	150	6	144	10	200	6x20
UG09	200	8	146	10	200	6x20

BRASS

WINDOW STAY



“ADJUSTABLE”

CODE No.	SIZE MM	SIZE INCHES	MRP SS/ABM	PCS / BOX	PCS / CASE	SCREW SIZE
UW01	Regular x 150	6	635	10	120	6x25

“DELUX”

CODE No.	SIZE MM	SIZE INCHES	MRP SS/ABM	PCS / BOX	PCS / CASE	SCREW SIZE
UW02	150	6	270	10	120	6x25

“SOLID”

CODE No.	SIZE MM	SIZE INCHES	MRP SS/ABM	PCS / BOX	PCS / CASE	SCREW SIZE
UW03	150	6	365	10	120	6x25
UW04	200	8	500	10	120	6x25

BRASS
DOOR EYE



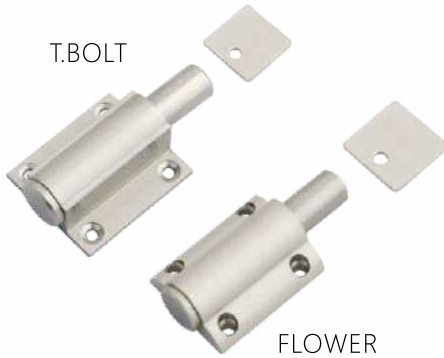
CODE No.	SIZE MM	SIZE INCHES	MRP SS/ABM	PCS / BOX	PCS / CASE
UE01	50	2 (Round)	200	12	144
UE03	50	2 (Square)	250	12	144

BRASS
BEARING PIVOT



CODE No.	SIZE MM	SIZE INCHES	MRP SS	PCS / BOX	PCS / CASE	SCREW SIZE
UB01	Regular x 100	4	990	5	60	8x30

BRASS
PUSH MAGNET



CODE No.	ITEM TYPE	MRP SS/ABM	PCS / BOX	PCS / CASE	SCREW SIZE
UB01	T.Bolt Type	156	20	240	5x20
UB02	Flower Type	205	20	240	5x20

BRASS
CONCEAL

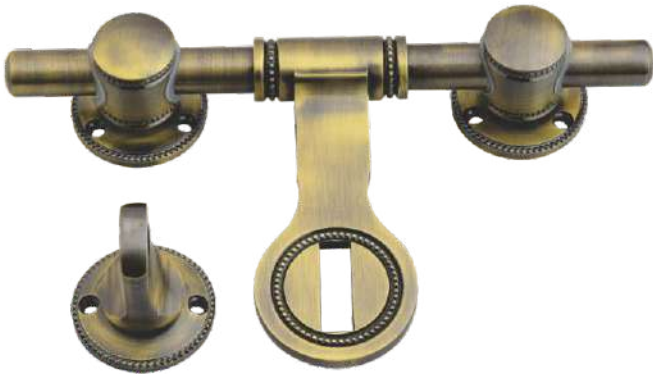


CODE No.	ITEM TYPE	SIZE INCHES	MRP SS/ABM	PCS / BOX	SCREW SIZE
UPC01	PLAIN	3/4x1	101	40	6x25
UPC02	PLAIN	1x1	128	40	6x25
UPC03	THREE PCS	1x1.1/2	118	40	6x25

always something new...

BRASS

ALDROPS



JORJAN

CODE No.	SIZE MM	SIZE INCHES	MRP SS/ABM
VA01	16x200 (2+1)	5/8x8	2050
VA02	16x250 (2+1)	5/8x10	2220
VA03	16x300 (3+1)	5/8x12	2650
VA04	16x350 (3+1)	5/8x14	2810
VA08	19x300 (3+1)	3/4x12	4400
VA09	19x350 (3+1)	3/4x14	4570
VA10	19x400 (3+1)	3/4x16	4940
VA11	19x450 (3+1)	3/4x18	5240
VA17	25x400 (3+1)	1x16	15100
VA18	25x450 (3+1)	1x18	15700
VA19	25x500 (3+1)	1x20	15900
VA20	25x550 (3+1)	1x22	17500
VA21	25x600 (3+1)	1x24	18100
VA28	-	5/8 Extra Clip	285
VA29	-	5/8 Extra Lock	285
VA30	-	3/4 Extra Clip	530
VA31	-	3/4 Extra Lock	440
VA32	-	1 Extra Clip	1770
VA33	-	1 Extra Lock	1770



PLUS

CODE No.	SIZE MM	SIZE INCHES	MRP SS/ABM
VA34	12x150 (2+1)	1/2x6	1195
VA35	12x200 (2+1)	1/2x8	1310
VA36	16x200 (2+1)	5/8x8	1570
VA38	16x300 (3+1)	5/8x12	2150
VA63	-	1/2 Extra Clip	157
VA64	-	1/2 Extra Lock	157
VA42	-	5/8 Extra Clip	154
VA43	-	5/8 Extra Lock	187

BRASS

TADI



CODE No.	SIZE MM	SIZE INCHES	MRP SS/ABM
VL01	12x200	1/2x8	1150
VL02	12x250	1/2x10	1260
VL03	12x300	1/2x12	1380

BRASS

JULLA FITTINGS



CODE No.	NAME	MRP SS/ABM
VJ01	Bearing Siling Kada Fancy (2 Pcs)	3600
VJ02	Bottam Kada (4 PCS)	3050
VJ03	S Hook (1 Pcs)	301
VJ04	Jula Chain 'jorjan'	295

GLASS

CORNER 6MM



CODE No.	SIZE INCHES	MRP CP	PCS / BOX	PCS/ CARTOON
MBA001	8x8	1290	1	12
MBA002	10x10	1395	1	12
MBA003	12x12	1470	1	12

GLASS

SELF 6MM



CODE No.	SIZE INCHES	MRP CP	PCS / BOX	PCS/ CARTOON
MBA007	5.5x12	1470	1	12
MBA008	5.5x15	1570	1	12
MBA009	5.5x18	1660	1	12

always something new...



OVEL

CODE No.	SIZE IN POINT	MRP CP	PCS / BOX	SCREW SIZE
VK37	3	393	10	6x30
VK38	4	524	10	6x30
VK39	5	655	10	6x30
VK40	6	786	10	6x30



VOLVO

CODE No.	SIZE IN POINT	MRP CP	PCS / BOX	SCREW SIZE
VK23	3	393	10	6x30
VK24	4	524	10	6x30
VK25	5	655	10	6x30
VK26	6	786	10	6x30



PIANO

CODE No.	SIZE IN POINT	MRP CP	PCS / BOX	SCREW SIZE
VK16	3	393	10	6x30
VK17	4	524	10	6x30
VK18	5	655	10	6x30
VK19	6	786	10	6x30



KAJU

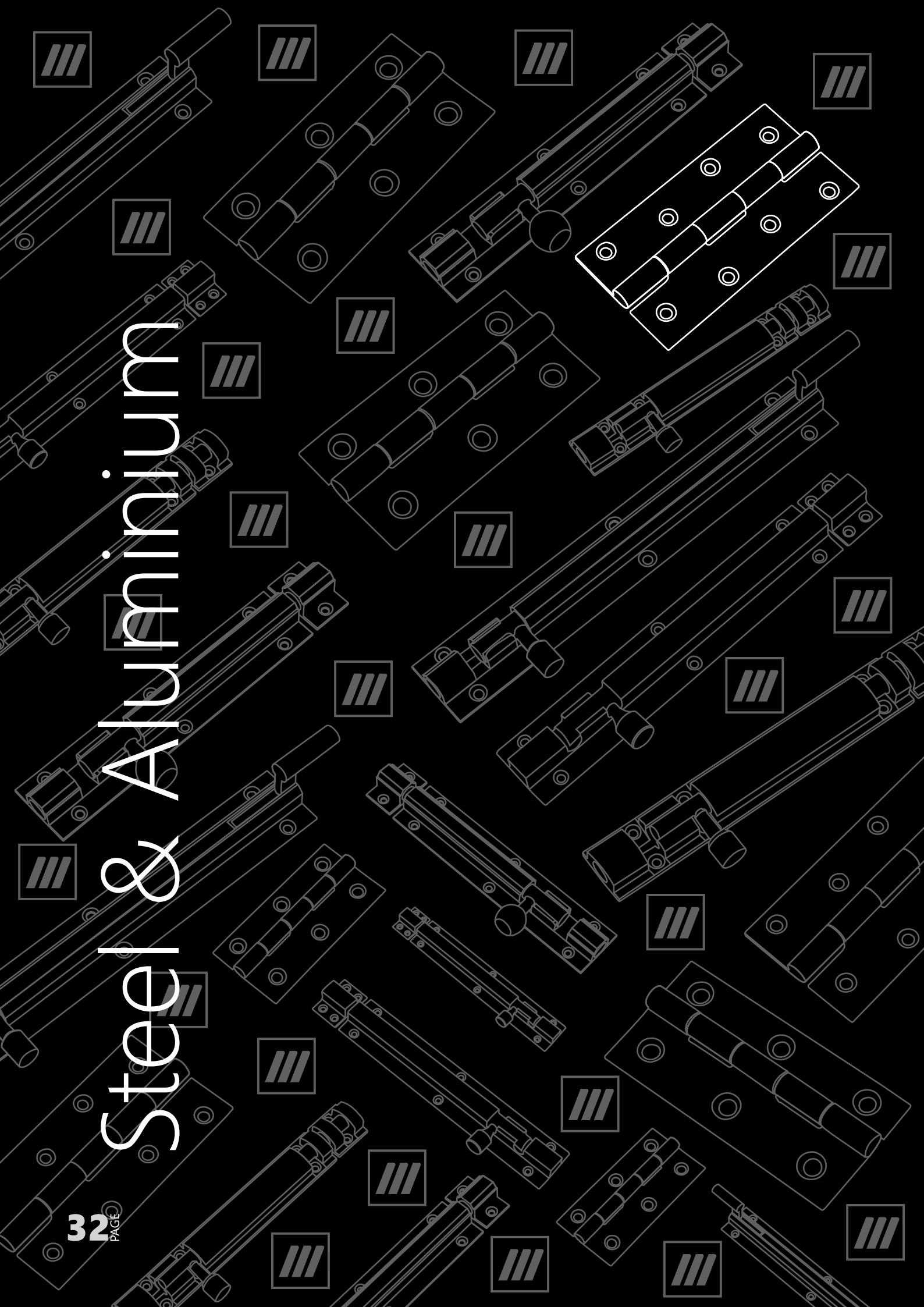
CODE No.	SIZE IN POINT	MRP CP	PCS / BOX	SCREW SIZE
VK02	3	393	10	6x30
VK03	4	524	10	6x30
VK04	5	655	10	6x30
VK05	6	786	10	6x30



SQUARE

CODE No.	SIZE IN POINT	MRP CP	PCS / BOX	SCREW SIZE
VK44	3	529	10	6x30
VK45	4	700	10	6x30
VK46	5	875	10	6x30
VK47	6	1050	10	6x30

Steel & Aluminium





STEEL HINGES
WELDED



CODE No.	SIZE	MRP SS	MRP ABM/BCM	PCS / BOX	PCS / CASE	SCREW SIZE
SHM05	3x16 (CUT)	47	59	30	600	6x20
SHM06	3x16	49	63	30	600	6x20
SHM07	3x14	58	75	20	400	7x20
SHM08	4x14	85	114	10	300	7x25
SHM09	5x14	111	148	10	200	7x30
SHM14	3x12	86	110	20	400	7x25
SHM15	4x12	111	148	10	300	8x30
SHM16	5x12	133	186	10	200	8x30
SHM17	6x12	186	248	10	160	8x30
SHM18	5x10	233	306	10	200	8x35
SHM19	6x10	277	366	10	160	8x35

STEEL TOWER BOLT
Dia. 10MM



ROUND

CODE No.	SIZE MM	SIZE INCHES	MRP SS	PCS / BOX	PCS / CASE	SCREW SIZE
STM02	100	4	92	10	240	6x20
STM03	150	6	132	10	200	6x20
STM04	200	8	175	10	160	6x20



HEAVY 1 PCS

CODE No.	SIZE MM	SIZE INCHES	MRP SS	PCS / BOX	PCS / CASE	SCREW SIZE
STM36	100	4	88	10	240	6x20
STM37	150	6	126	10	200	6x20
STM38	200	8	168	10	160	6x20

STEEL TOWER BOLT
Dia. 12MM



SQUARE

CODE No.	SIZE MM	SIZE INCHES	MRP SS	PCS / BOX	PCS / CASE	SCREW SIZE
STM13	12x100	4	134	10	240	6x25
STM14	12x150	6	183	10	200	6x25
STM15	12x200	8	242	10	160	6x25

always something new...



HEAVY 1 PCS

CODE No.	SIZE MM	SIZE INCHES	MRP SS	PCS / BOX	PCS / CASE	SCREW SIZE
STM39	12x100	4	130	10	240	6x25
STM40	12x150	6	177	10	200	6x25
STM41	12x200	8	234	10	160	6x25

STEEL TOWER BOLT **NECK**



CODE No.	SIZE MM	SIZE INCHES	MRP SS	PCS / BOX	PCS / CASE	SCREW SIZE
STM18	100	4	117	10	240	5x25
STM19	150	6	170	10	200	5x25
STM20	200	8	225	10	160	5x25

TOWER BOLT **ALUMINIUM**



"MAXICO"

CODE No.	SIZE MM	SIZE INCHES	MRP SS/ABM	PCS / BOX	PCS / CASE	SCREW SIZE
MAT17	100	4	137	5	240	6x20
MAT18	150	6	206	5	200	6x20
MAT19	200	8	274	5	160	6x20
MAT21	300	12	411	5	80	6x20

"TAPPER NX"



CODE No.	SIZE MM	SIZE INCHES	MRP SS/ABM	PCS / BOX	PCS / CASE	SCREW SIZE
MAT09	100	4	120	5	240	5x20
MAT10	150	6	180	5	200	5x20
MAT11	200	8	240	5	160	5x20
MAT13	300	12	360	5	80	5x20

"10MM"



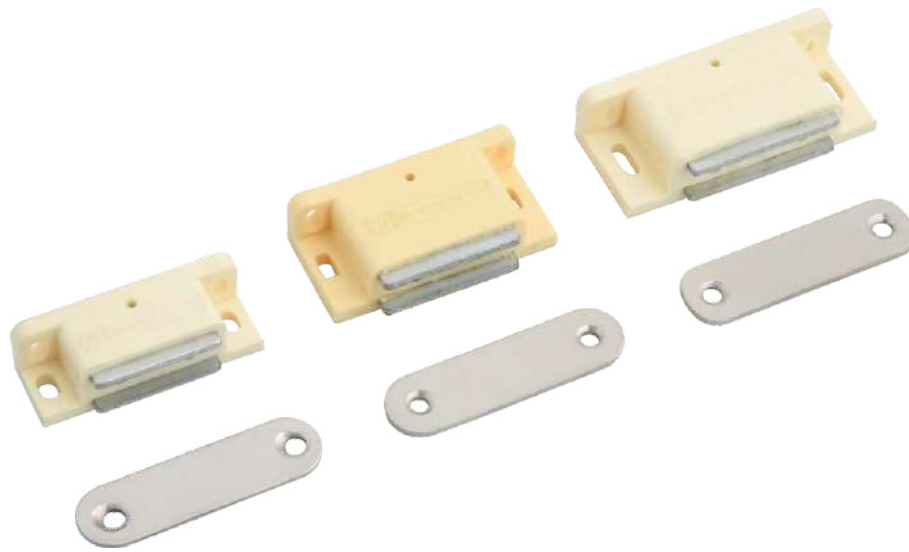
CODE No.	SIZE MM	SIZE INCHES	MRP SS/ABM	PCS / BOX	PCS / CASE	SCREW SIZE
MAT25	100	4	138	5	240	5x25
MAT26	150	6	207	5	200	5x25
MAT27	200	8	276	5	160	5x25
MAT28	250	10	345	5	80	5x25
MAT29	300	12	414	5	80	5x25
MAT31	450	18	621	5	36	5x25
MAT32	600	24	828	5	36	5x25

"12MM"



CODE No.	SIZE MM	SIZE INCHES	MRP SS/ABM	PCS / BOX	PCS / CASE	SCREW SIZE
MAT33	100	4	152	5	240	6x25
MAT34	150	6	228	5	200	6x25
MAT35	200	8	304	5	160	6x25
MAT36	250	10	380	5	80	6x25
MAT37	300	12	456	5	80	6x25
MAT39	450	18	684	5	36	6x25
MAT40	600	24	912	5	36	6x25

MAGNETIC
DOOR CATCHER



M TYPE

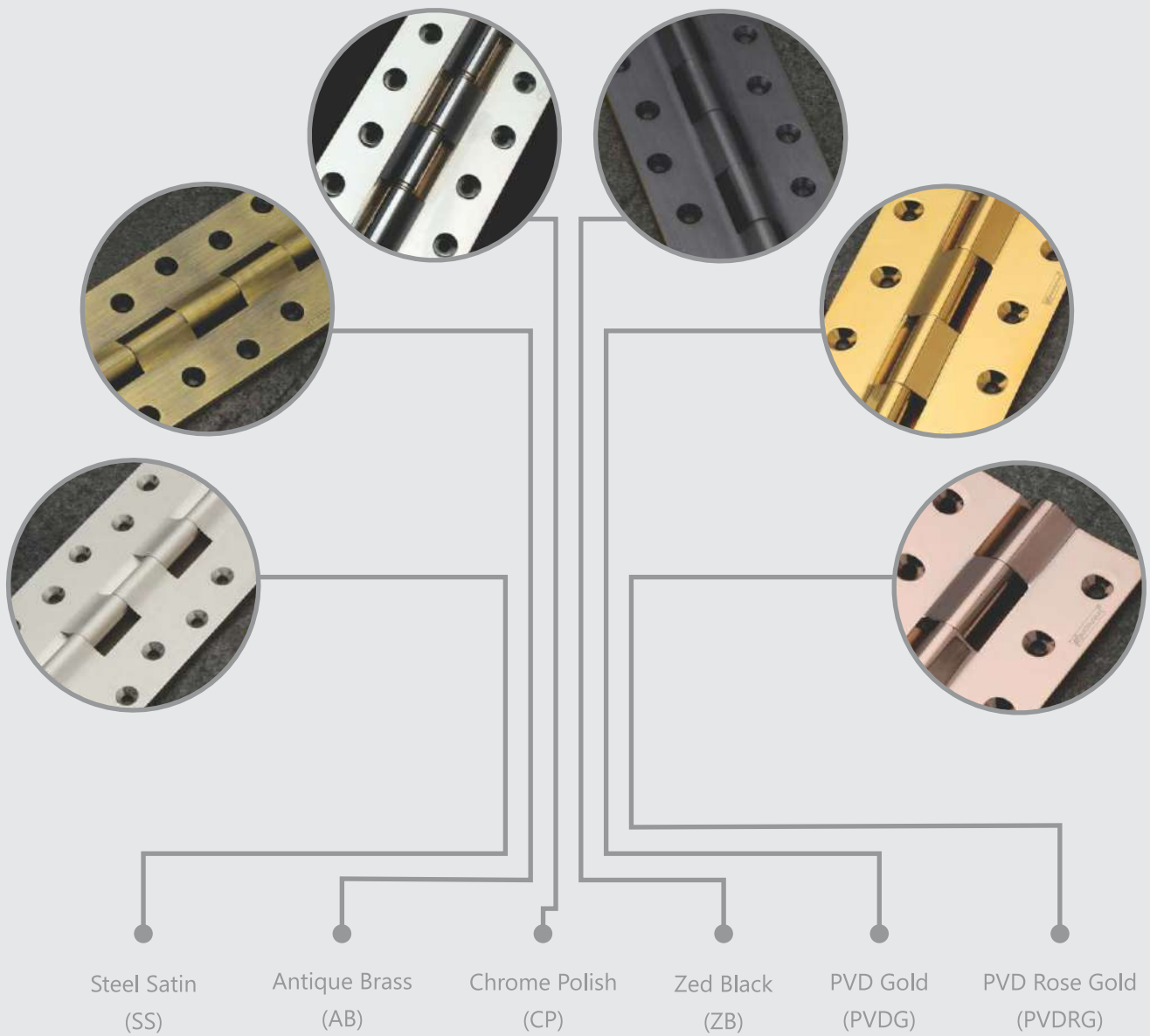
CODE No.	ITEM	SIZE INCHES	MRP IVORY	PCS / BOX	PCS / CASE
MDC1	M- NO.1	SMALL	13	60	600
MDC2	M- NO.2	MEDIUM	16	50	500
MDC3	M- NO.3	LARGE	19	40	400



D TYPE

CODE No.	ITEM	SIZE INCHES	MRP WHITE	PCS / BOX	PCS / CASE
MDC4	D- NO.1	SMALL	14	60	600
MDC5	D- NO.2	MEDIUM	17	50	500
MDC6	D- NO.3	LARGE	20	40	400

Available Finishes



always something new...